

Avon a Good Time

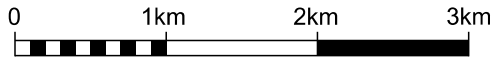
WARA Spring 24 Hour Rogaine, 18th-19th August 2018



Western Australian Rogaining Association,
PO Box 1201, Subiaco WA 6904
eventinfo@wa.rogaine.asn.au

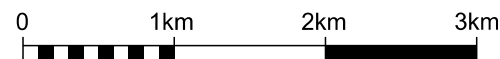
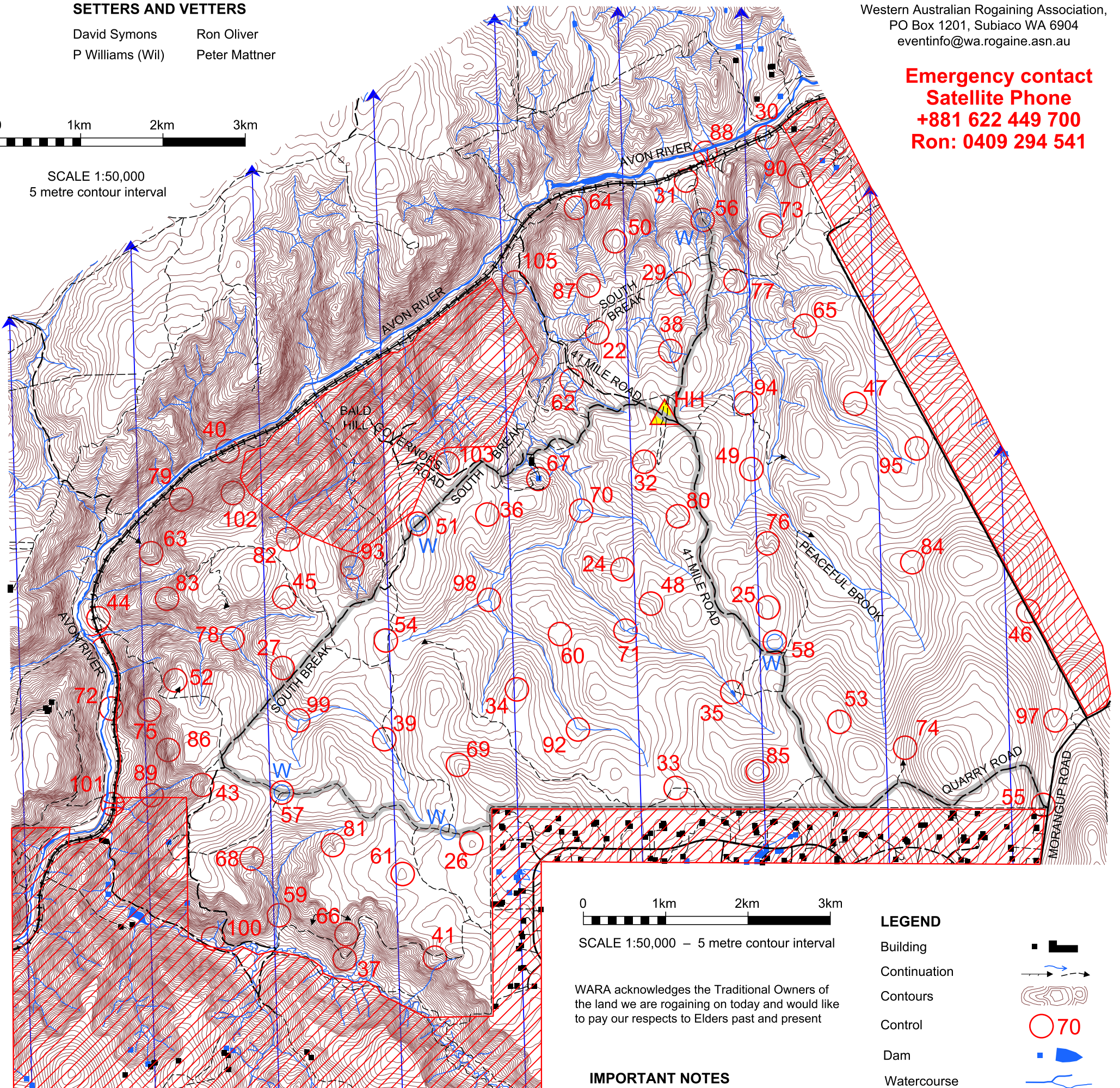
SETTERS AND VETTERS

David Symons Ron Oliver
P Williams (Wil) Peter Mattner



SCALE 1:50,000
5 metre contour interval

Emergency contact
Satellite Phone
+881 622 449 700
Ron: 0409 294 541



SCALE 1:50,000 – 5 metre contour interval

WARA acknowledges the Traditional Owners of the land we are rogaining on today and would like to pay our respects to Elders past and present

IMPORTANT NOTES

The railway track and surrounding embankments are **STRICTLY** out of bounds. You may cross under the railway. Three appropriate options are shown on the map. A direct path between 72 and 75 is not allowed, punching times may be scrutinised (suggest going via 44 or 101).

There is a large rock/cliff SE of control 79. Please be extremely careful and do not approach within 50m of the control from that direction.

Control locations have been chosen to favour attractive terrain, views, and to avoid thick sections. However, the far south of the map contains some very dense bush.

LEGEND

Building	
Continuation	
Contours	
Control	
Dam	
Watercourse	
Water Drop	
Hash House	
Magnetic North Line	
Out of Bounds	
Railway (Out of Bounds)	
Crossing Point	
Patrolled Road	
Road, Bitumen	
Road, Major Gravel	
Road, Minor Gravel	
Fenceline	

THANKS

Thanks the WARA committee, pubsub, setters/vetters, training and associated volunteers. Thanks to all event volunteers. Your time and contribution is truly valued and makes Rogaining possible.



Thanks to Rebecca Hamilton for her continued support in organising land access, and to the Perth Hills Park Ranger, Paul Udinga, for his support and assistance.



The State Government through the Department of Local Government, Sport and Cultural Industries and Lotterywest, is a major supporter of Rogaining in Western Australia. Sport and recreation builds stronger, healthier, happier and safer communities.



Department of
**Local Government, Sport
and Cultural Industries**

No.	Description	Pts	No.	Description	Pts	No.	Description	Pts
22	Head of the watercourse.	20	50	The broad knoll.	50	80	The gully.	80
24	The gully, upper part.	20	51	The track, high point 30m at 125 degrees WATER	50	81	The gully.	80
25	A broad knoll.	20	52	The broad gully.	50	82	The spur.	80
26	The broad knoll.	20	53	The knoll.	50	83	The saddle.	80
27	The broad gully.	20	54	A dam, west side.	50	84	The broad saddle.	80
29	The watercourse junction.	20	55	Park entrance info hut, 60m at 285 degrees.	50	85	The broad knoll.	80
			56	The track bend. WATER	50	86	The broad gully, bottom of.	80
			57	The track junction. WATER	50	87	The broad knoll.	80
30	The depression.	30	58	A granite outcrop, northern side. WATER	50	88	The watercourse.	80
31	An abandoned building.	30	59	The watercourse.	50	89	The watercourse.	80
32	The gully, upper part.	30						
33	The track bend, eastern end.	30	60	The broad saddle.	60			
34	The broad knoll.	30	61	The broad knoll.	60	90	The spur.	90
35	The dam, north side.	30	62	The watercourse junction.	60	92	The watercourse bend.	90
36	The broad knoll.	30	63	The gully, a watercourse.	60	93	The northern watercourse junction.	90
37	The track bend.	30	64	The watercourse.	60	94	A watercourse.	90
38	The watercourse junction.	30	65	The gully.	60	95	The spur, on granite outcrop.	90
39	The watercourse.	30	66	The saddle.	60	97	The broad gully.	90
			67	The dam, southern side.	60	98	The watercourse junction.	90
			68	The broad spur.	60	99	The watercourse junction.	90
40	A power pole on the spur.	40	69	The broad spur.	60			
41	The spur, upper part.	40						
43	The spur.	40	70	The watercourse junction.	70	100	The watercourse junction.	100
44	The track junction. 30m at 50 degrees.	40	71	The watercourse junction.	70	101	The watercourse, a culvert, western side.	100
45	The broad gully.	40	72	The Avon River, eastern side.	70	102	A watercourse	100
46	A fence post.	40	73	A knoll.	70	103	The watercourse.	100
47	The shallow gully.	40	74	A track bend.	70	105	The watercourse junction.	100
48	A granite outcrop, northern end.	40	75	The spur.	70			
49	The shallow gully.	40	76	The gully.	70			
			77	The spur.	70			
			78	The watercourse bend.	70			
			79	A rock surface, bottom of. CLIFF WARNING	70			

Water Drops Controls 51, 56, 57, 58 and track junction west of control 26.
If you are injured, please make your way to a water drop or a patrolled road and wait there for help.

Sunset Saturday 5:50pm
Sunrise Sunday 6:50am
Moonrise Saturday 11:23am
Moonset Sunday 1:02am

Hash House Opens 5:00pm Saturday
Closes 12:30pm Sunday

Start 12:00 noon Saturday
Finish 12:00 noon Sunday
Late Penalty 10 points per minute or part minute
Late (no points) later than 12:30pm Sunday

Controls Used 78
Total Points 4640